

exocam powered by ModuleWorks

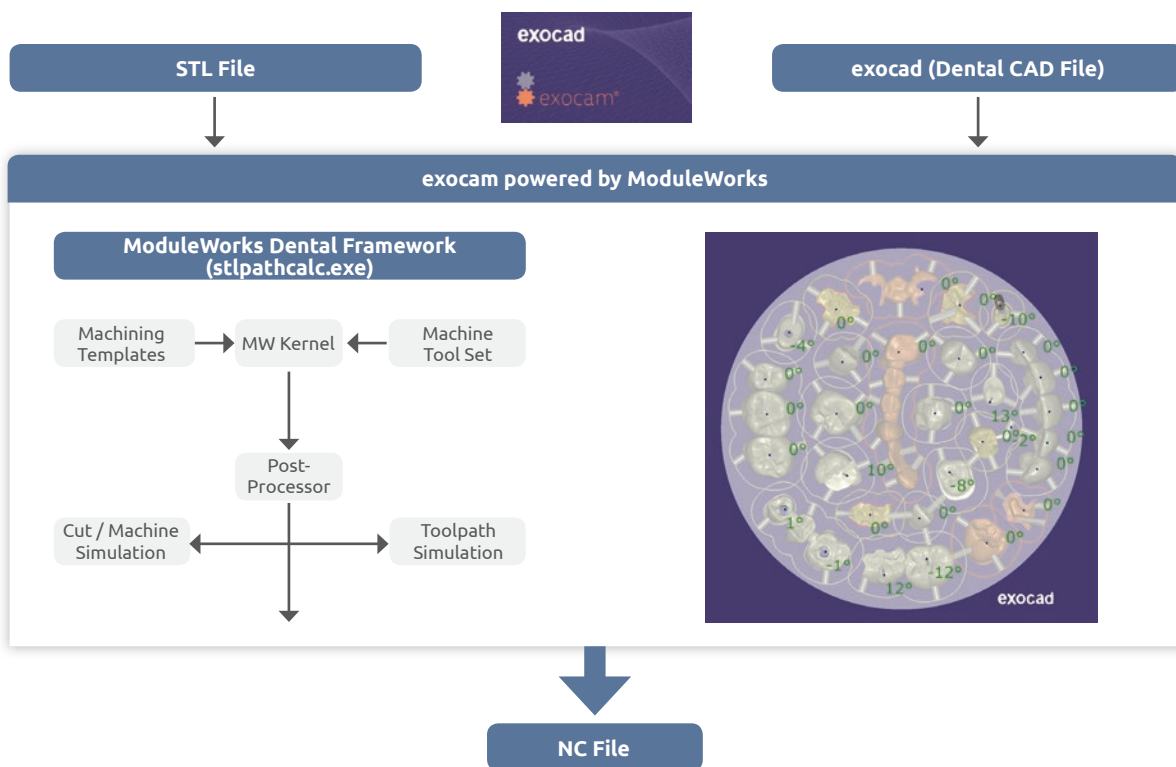
"exocam powered by ModuleWorks" is exocad nesting module powered by ModuleWorks Dental Framework (DF). DF is a Dental CAM-Engine which performs toolpath calculation and outputs the corresponding NC file.

DF is utilized with open Machining Templates in form of xml scripts, and a complete toolset library to manufacture a wide spectrum of dental indications. The integrated kernel which is used for toolpath calculations, provides high performance 3- and 5-Axis CAM features which enhance machining strategies in dental milling and Grinding applications. DF can be featured with optional Machine, and Material Removal Simulations.

The easy to use exocad-exocam environment with open interface for loading CAD files designed in exocad (*.dentalCAD) or other CAD software (*.stl), high performance integrated CAM-Engine with verified machining templates, all deliver a complete dental CAM product that boosts efficiency and productivity in dental labs and milling centers.

Targeted markets:

- Dental CNC machine resellers
- Dental CNC machine manufacturers (OEM)
- Chair-side



Roland

CNC Machines
(Post-Processor)



imes-icore

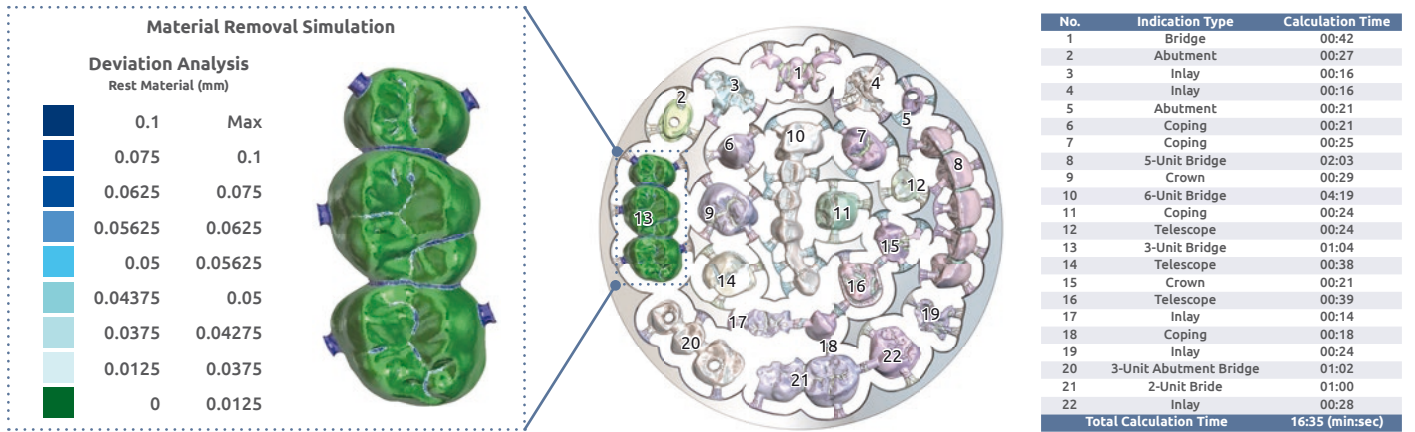
Indication Spectrum

DENTAL INDICATIONS

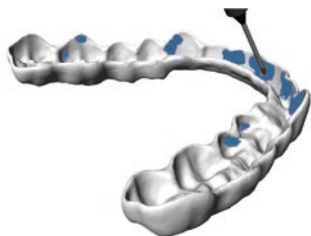
- Available
- Coming Soon
- Not Applicable

	Coping	Crown	Inlay	Onlay	Abutment	Veneer	Telescope	Bridge	Splint	Model	Denture	Implant-Bridge	Partial-Denture	Surgical Guide	Bar	Pre-mill	Implant based Abutments	
Milling (Zirconia, Plastics and Metals)	●	●	●	●	●	●	●	●	●	●	●	●	●	●	●	●	●	●
Grinding (Glass Ceramics)	●	●	●	●	●	●	●	●	●	●	●	●	●	●	●	●	●	●

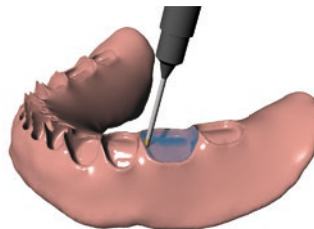
Calculation Time, Material Removal Simulation



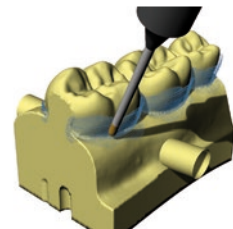
Milling



Automatic 3+2 Undercuts Machining

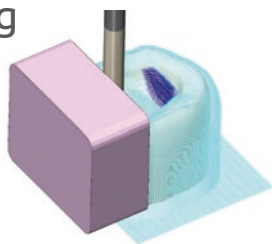


3 to 5-Axis Conversion with Project To Undercuts

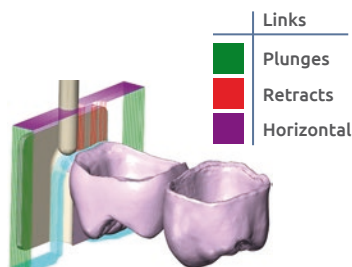


Automatic 5-Axis Undercuts Machining

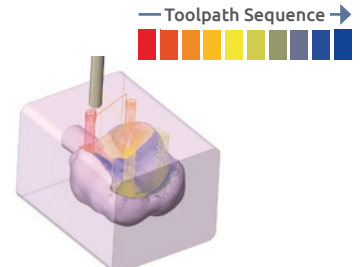
Grinding



Multiple Passes () on Full Width Cuts ()



Toolpath (Up-Milling)



Helical Toolpath into Multiple Deep Cavities

ModuleWorks

Innovating for You

Module Works GmbH
Aachen, Germany
Tel: +49 241 99 000 40
info@moduleworks.com
www.moduleworks.com

ModuleWorks Dental
www.moduleworks.com/dental
support-dental@moduleworks.com



Sign up for our Newsletter at:
www.moduleworks.com