

ModuleWorks Dental CAM

ModuleWorks Dental Framework is a dental CAM plug-and-play product that performs advanced toolpath calculations and outputs the corresponding NC file for dental CNC machines.

It uses verified and configurable machining templates in the form of xml scripts for efficient and flexible implementation and contains a complete toolset library for manufacturing a wide spectrum of dental indications.

The integrated CAM-engine, which is used for the toolpath calculations, provides high-performance 3-Axis, 4-Axis, and 5-Axis CAM features for enhanced machining strategies in dental milling and grinding (chair-side) applications.



exocad

3shape

UNIQUE
cadcam

Up3d

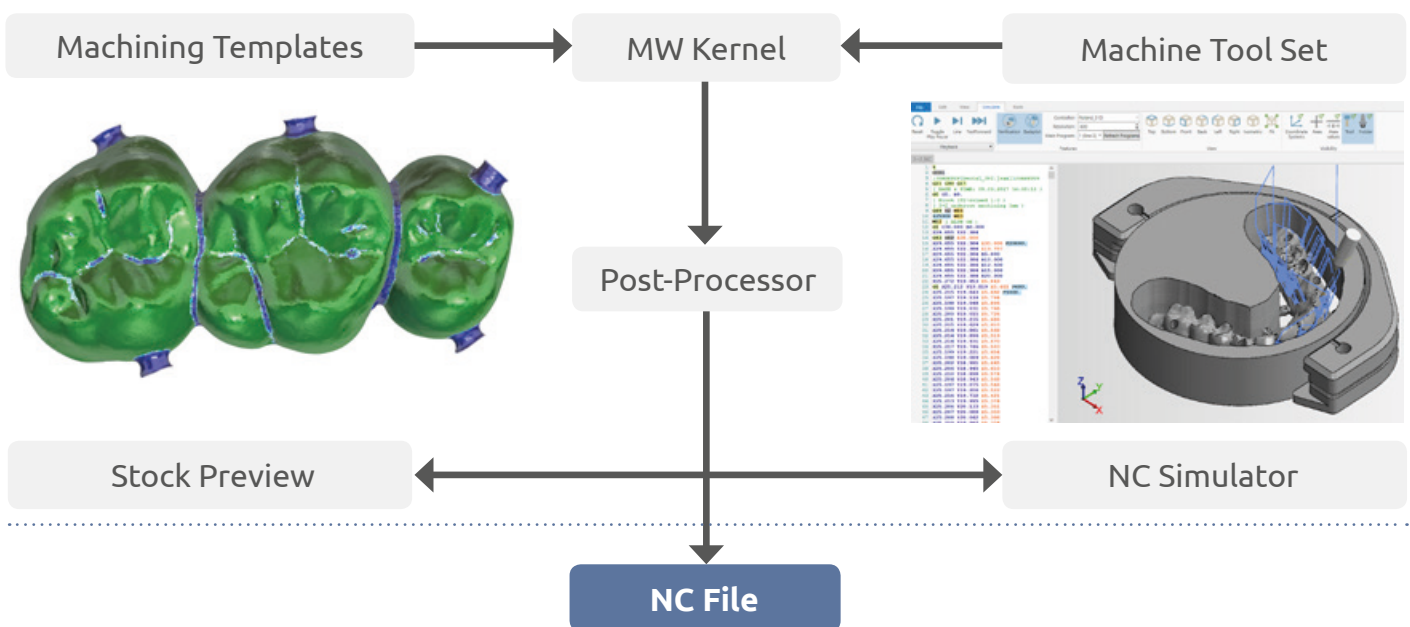
AVA DENT
Digital Dental Solutions

Dental Indications

Available
Coming Soon
Not Applicable

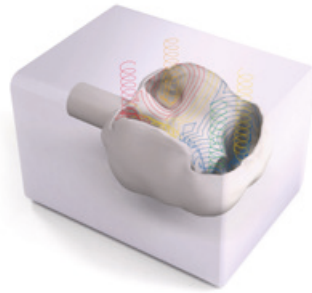
	Coping	Crown	Inlay	Onlay	Abutment	Veneer	Telescope	Bridge	Splint	Model	Denture	Implant Bridge	Partial-Denture	Surgical Guide	Bar	Pre-mill	One-Piece Abutment
Milling (Zirconia, Plastics and Metals)	Available	Available	Available	Available	Available	Available	Available	Available	Available	Available	Available	Available	Available	Available	Available	Available	Coming Soon
Grinding (Glass Ceramics)	Available	Available	Available	Available	Available	Available	Available	Available	Not Applicable	Not Applicable	Not Applicable	Not Applicable	Not Applicable	Not Applicable	Not Applicable	Available	Available

ModuleWorks Dental CAM (Dental Framework)





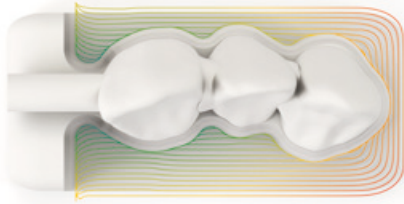
Parallel Offset Roughing



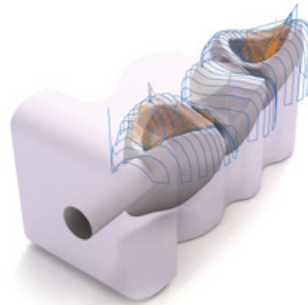
Helix into Multiple Deep Cavities



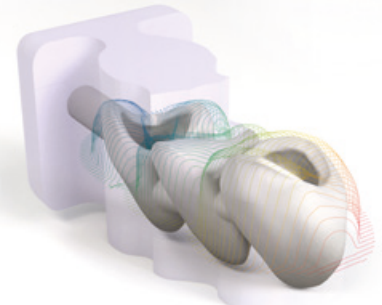
4-, 5-Axis Helix



Adaptive Roughing



Parallel Cuts Adaptive Depth Step



Constant Cusp Adaptive Stepover



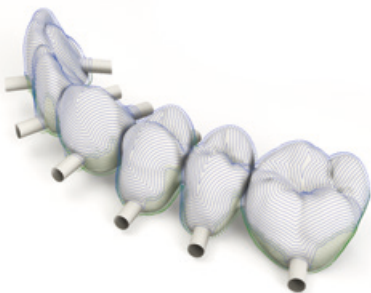
3-Axis Constant Cusp with excluded Undercuts



3+2-, 5-Axis Undercut Machining



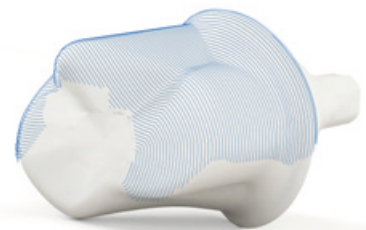
Undercut Machining Processed from both sides



3-Axis Constant Cusp 3D-Silhouette



Rest Finishing



4-, 5-Axis Geodesic

ModuleWorks

Innovating for You

ModuleWorks GmbH
Aachen, Germany
Tel: +49 241 99 000 40
info@moduleworks.com
www.moduleworks.com

ModuleWorks Japan
Fujisawa-City
Kanagawa-Prefecture
Japan
hashimoto.h@moduleworks.com



Sign up for our Newsletter at:
www.moduleworks.com

