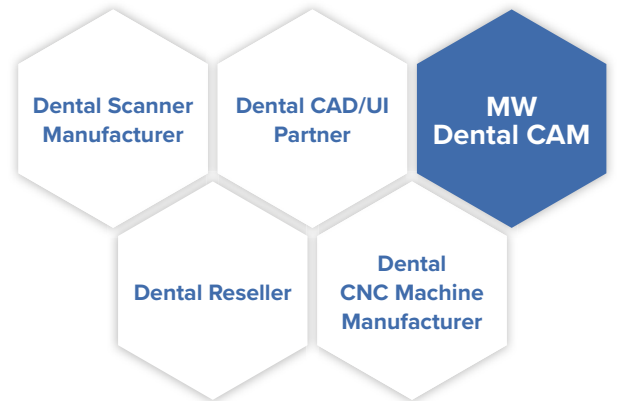




ModuleWorks
Get There Faster.

ModuleWorks Dental CAM Component

ModuleWorks Dental Framework is a dental CAM plug-and-play product that performs advanced toolpath calculations and outputs the corresponding NC file for dental CNC machines. It uses verified and configurable machining templates in the form of xml scripts for efficient and flexible implementation and contains a complete toolset library for manufacturing a wide spectrum of dental indications. The integrated CAM-engine, which is used for the toolpath calculations, provides high-performance 3-axis, 4-axis, and 5-axis CAM features for enhanced machining strategies in dental milling and grinding (chair-side) applications.



exocad

3shape

UNIQUE cadcam

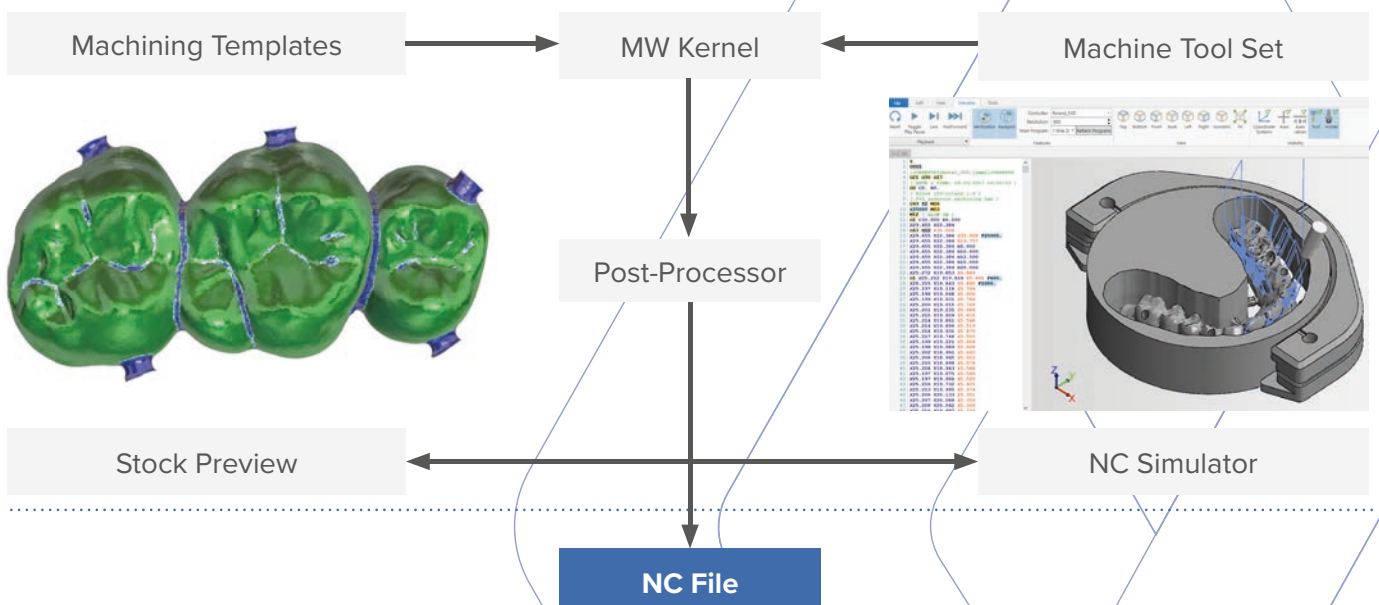
Up3d

AVADENT Digital Dentures

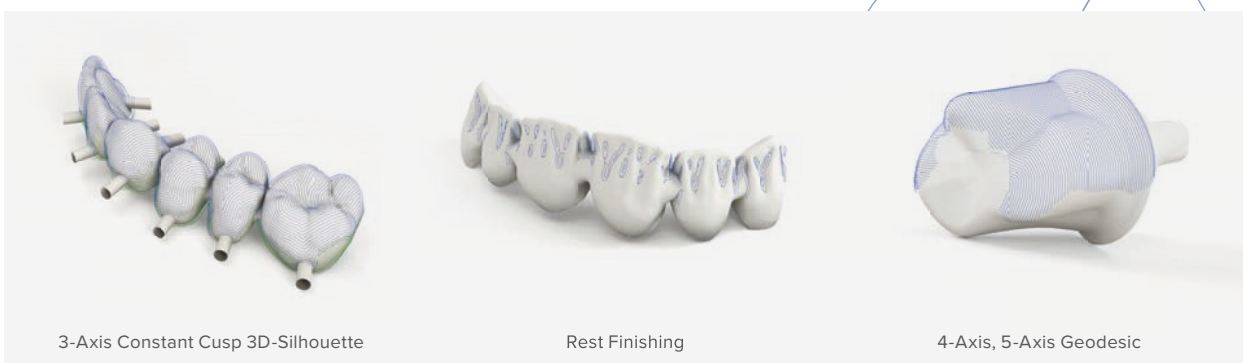
Dental Indications

	Coping	Crown	Inlay	Onlay	Abutment	Veneer	Telescope	Bridge	Splint	Model	Denture	Implant Bridge	Partial-Denture	Surgical Guide	Bar	Pre-mill	One-Piece Abutment
Available	●	●	●	●	●	●	●	●	●	●	●	●	●	●	●	●	●
Coming Soon																	●
Not Applicable									●	●	●	●	●	●	●	●	●
Milling (Zirconia, Plastics and Metals)	●	●	●	●	●	●	●	●	●	●	●	●	●	●	●	●	●
Grinding (Glass Ceramics)	●	●	●	●	●	●	●	●	●	●	●	●	●	●	●	●	●

ModuleWorks Dental CAM (Dental Framework)



Fact Sheet: ModuleWorks Dental CAM Component



ModuleWorks GmbH
Aachen, Germany
Tel: +49 241 99 000 40
info@moduleworks.com
www.moduleworks.com

ModuleWorks Japan
Fujisawa, Japan
Tel: +81 466 54 9144
hashimoto.h@moduleworks.com
www.moduleworks.com



Sign up for our Newsletter at:
www.moduleworks.com