



Julia Meyer-Hendricks

Head of Business Development  
Digital Manufacturing



Sebastian Wallraff

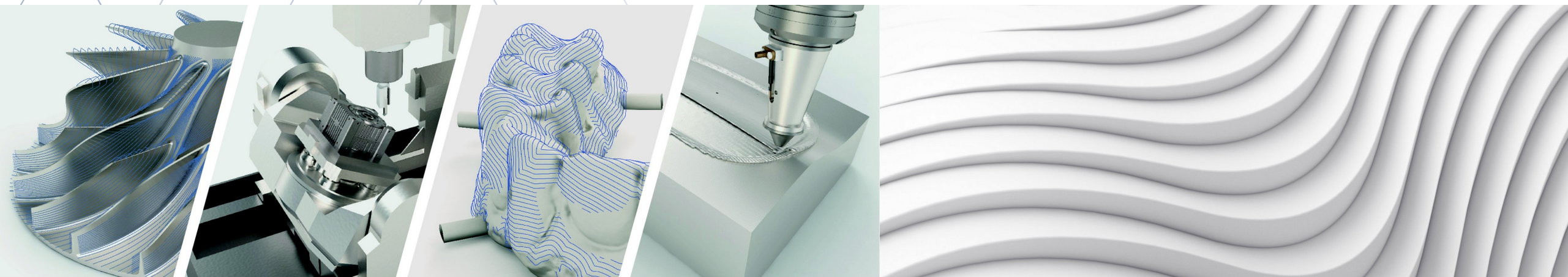
Head of Technology  
Digital Manufacturing

# MIC 2022



## ModuleWorks

Get There Faster.



## Five Things You Did Not Know About ModuleWorks

Sebastian Wallraff | Julia Meyer-Hendricks





## 1. Evaluation Kits







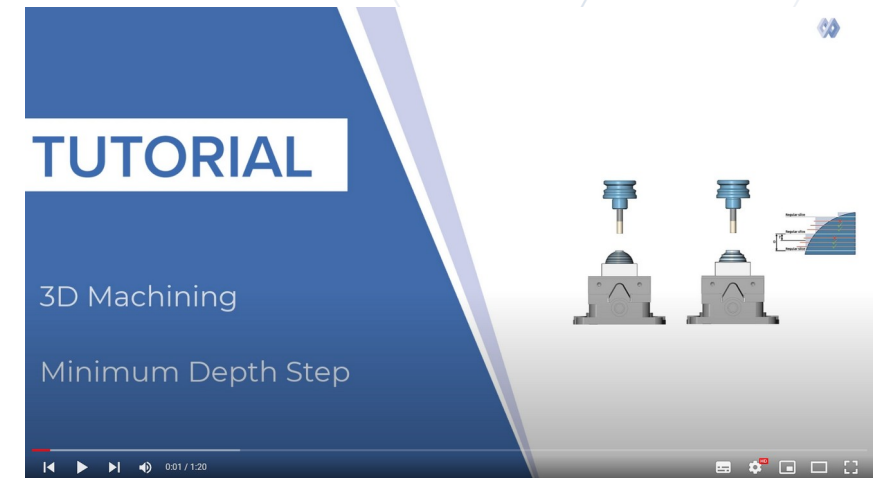
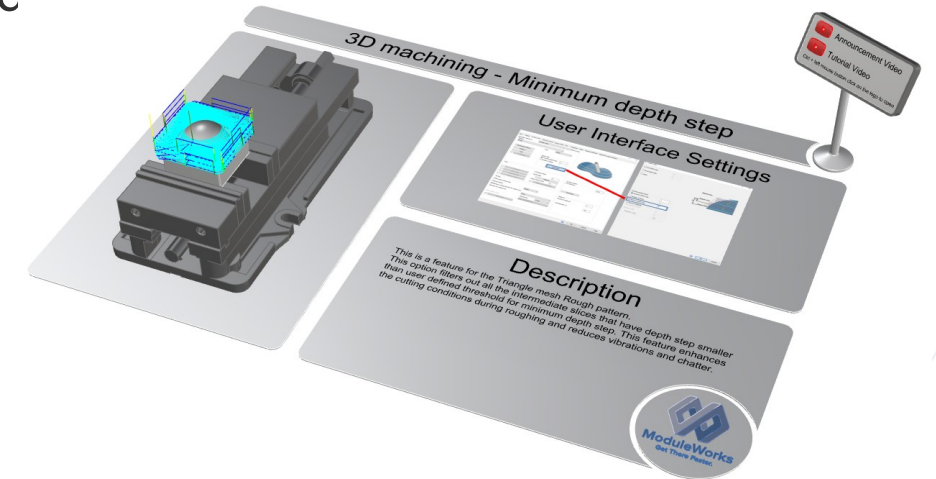
## 2. Release Content



# Release Content

- We have a Release Cycle of 4 Months, new Content and SDK in April, August and December.
- Deliverables
  - SDK
  - Documentation
    - API Documentation – Developer Guide
    - End User Documentation – Application Guide
  - (Updated) Evaluation Kits
  - Feature Update Content
    - What's New Document
    - YouTube Playlist with Feature Announcements
    - Examples Geometries and Tool Path within Rhino
    - Video Tutorials for Feature Application
    - HD Picture

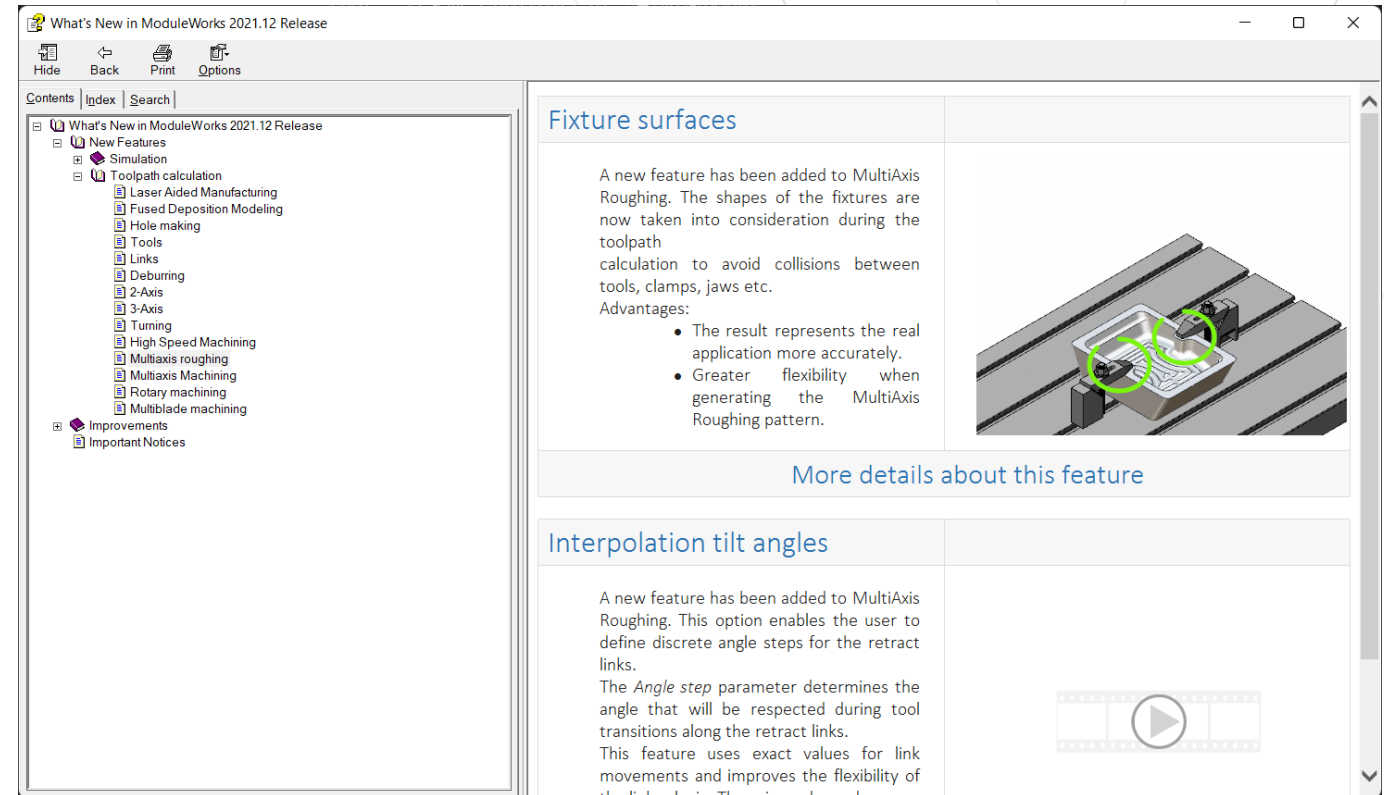
# MIC 2022





# What's New Document

- Contains a list of all new features for all released products
  - Description
  - Animation
  - User Interface Changes
- Contains a list of all major improvements
  - Calculation Speed
- Contains important notices
  - Major changes that potentially change the integration
    - API Changes
    - Major UI Changes
    - License Changes
  - Examples
    - 3-Axis Data Model is getting removed from Cutsim within Machine Simulation.
    - Drilling License to be replaced with Hole Making Drilling License.











# HD Graphics

- We create a HD resolution picture
  - Used as Thumbnail for Youtube
  - Used in PR articles about new

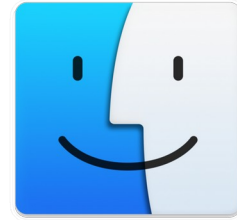
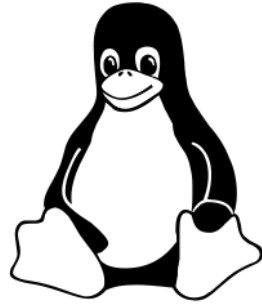
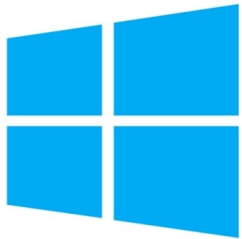
**All of the previous content that we generate is available for download or can be reused to create your own marketing or information materials.**



### 3. Platforms

# Platform Support

## Operating Systems



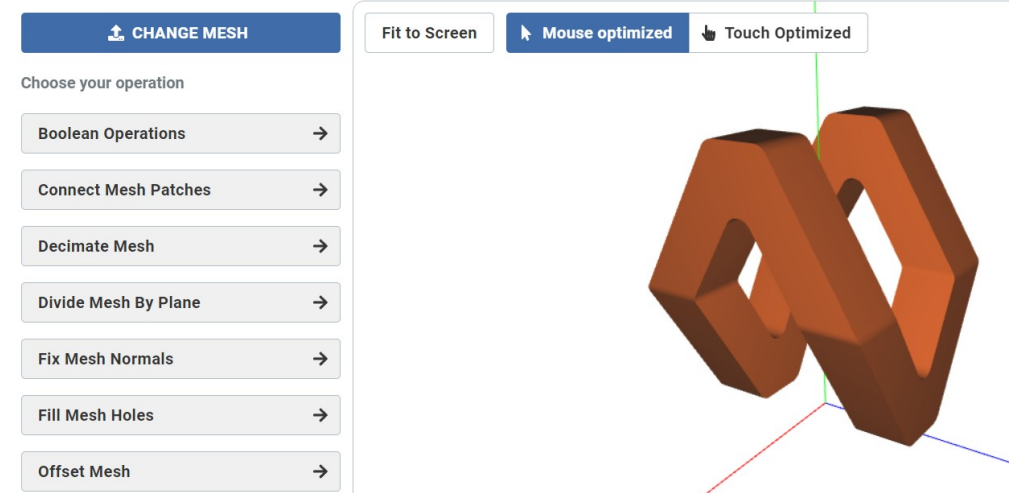
MacOS

MIC  
2022



## Cloud Technologies

- Provide platforms to OEMs (Platform as a service, PaaS).
  - SDK in the Cloud
- Provide end-user products/service (Software as a service, SaaS).
  - Cloud Computing - moving all computationally intensive toolpath calculations to a (fast) server.
  - [MeshToolkit - Customize your meshes](#)



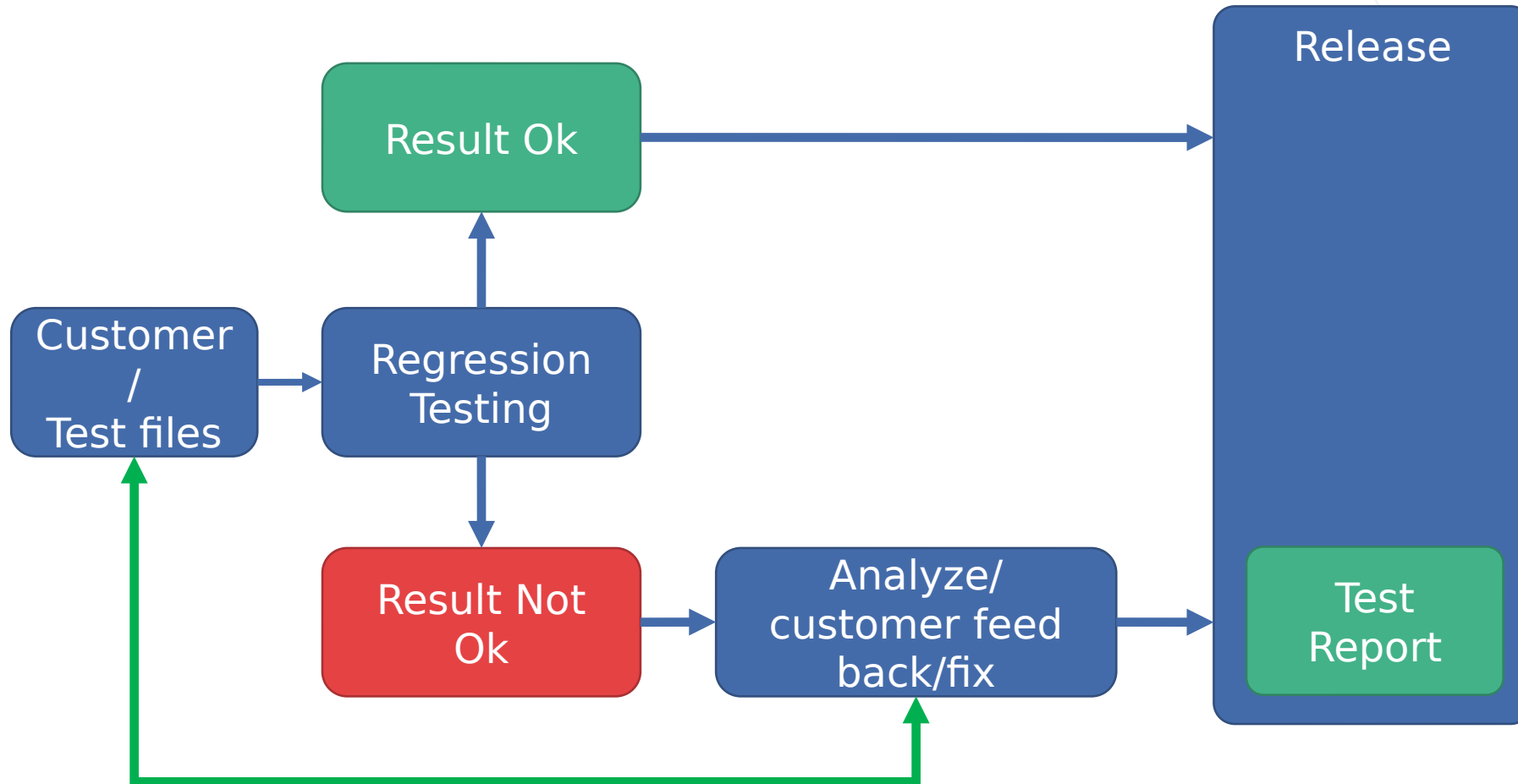


## 4. Customer Regression Testing





# Customer Regression Testing

**Benefits:**

- Make sure that the Release is working properly BEFORE publishing.
- Peace of Mind for you.
- Reduces fixing after Release.
- on ModuleWorks side.
- Reduces Number of SPs.
- Peace of Mind for ModuleWorks.



## 5. Premium Services

MIC  
2022

### Technical Account Management / Integration

- Technical Account Manager proactively manages the customers' demands and requests
- An exclusive integration team helping to do the integration from A-Z, or maintaining the integration
- (End) User Training for special applications MW

### Promotion

- Machining Trials
- Marketing/Sales Support: help with PR-stories, graphics, pictures and fact sheets to accelerate sale

### Development Projects

- A development team doing dedicated development for specific areas.
- Research Projects incl. Application, organization and engagement in mutual research projects
- Project Management incl. Scheduling, planning, specifying and estimating projects





## Guest Presenters





# Digital Manufacturing – Guest Presenters



**Marko Stugbäck**

Software Manager – Digital Machining Business  
Sandvik Coromant



**Tobias Unosson**

Product Manager – Design & Planning  
Sandvik Coromant



**Craig Chester**

Product Manager  
Autodesk



**Al Whatmough**

Director of Product Management  
Autodesk



**Jose Coronado**

Product Management  
Director  
Creo, PTC



# Thank you for your attention



# ModuleWorks

Get There Faster.

[www.moduleworks.com](http://www.moduleworks.com)  
[info@moduleworks.com](mailto:info@moduleworks.com)

Also follow ModuleWorks on:

