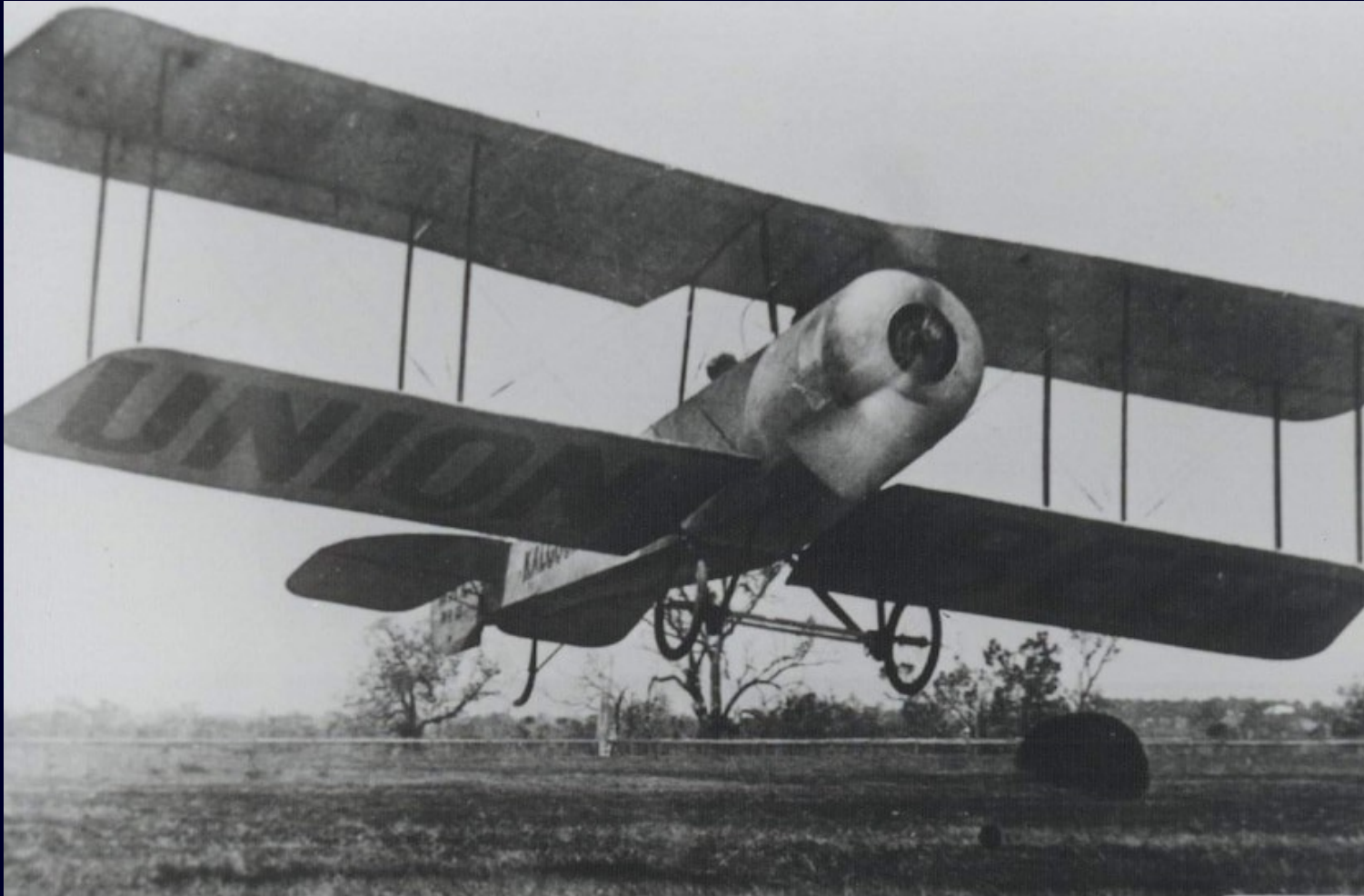


Digital Twin from machine manufacturer to machine user

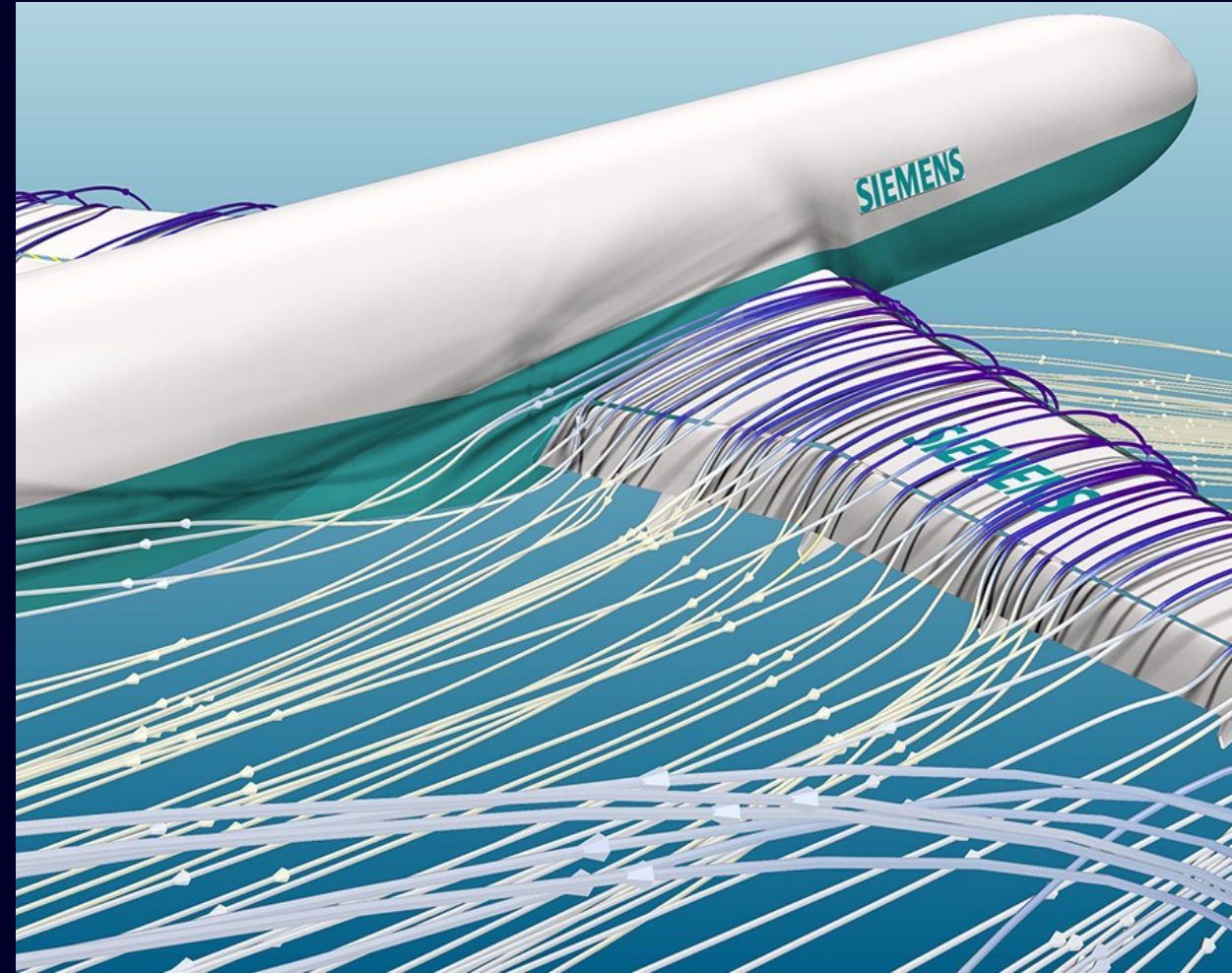
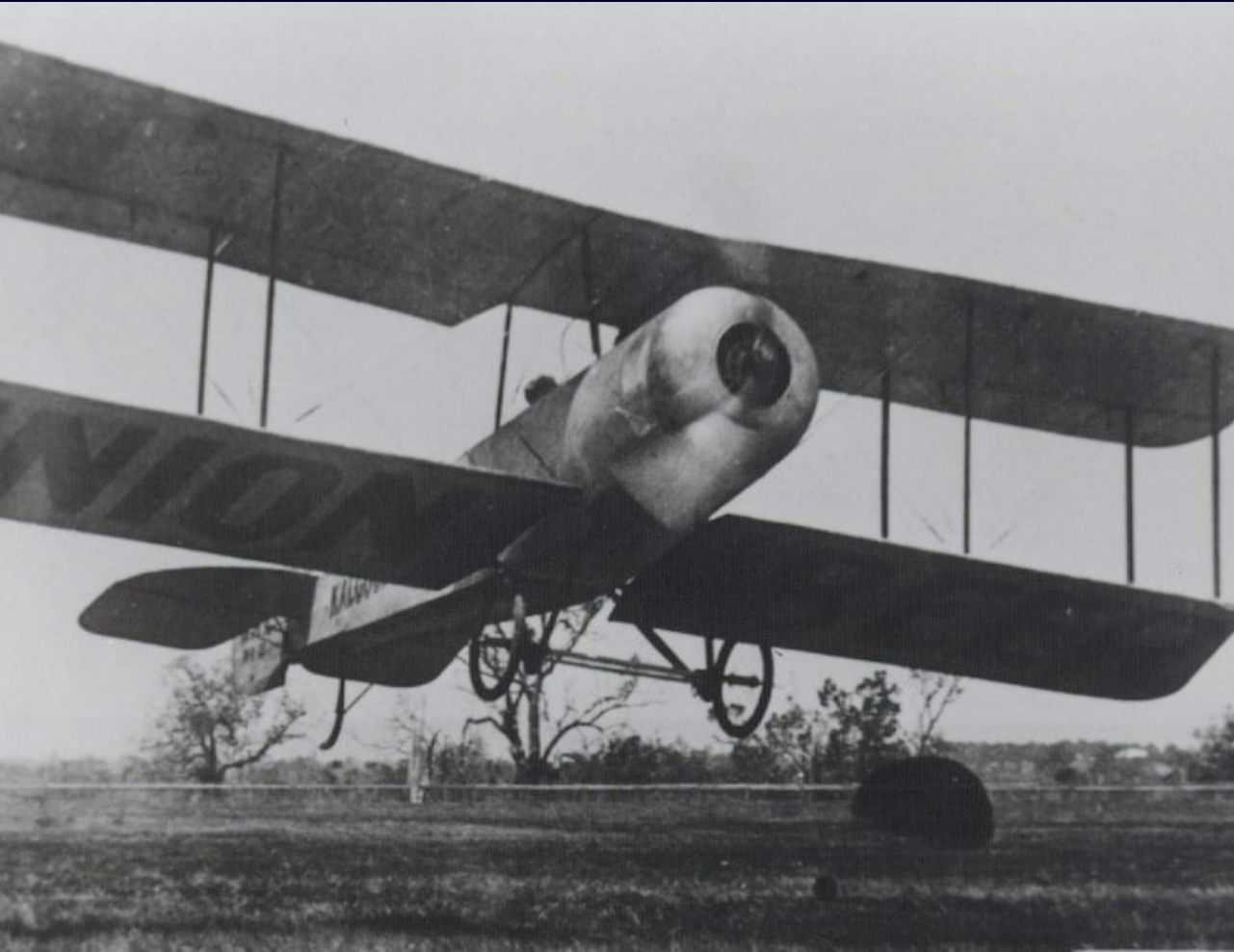
Seamless integration of the digital twin into the machine engineering process and transition of digital engineering into virtual job preparation

Why a Digital Twin in engineering?

Engineering more than 100 years ago...



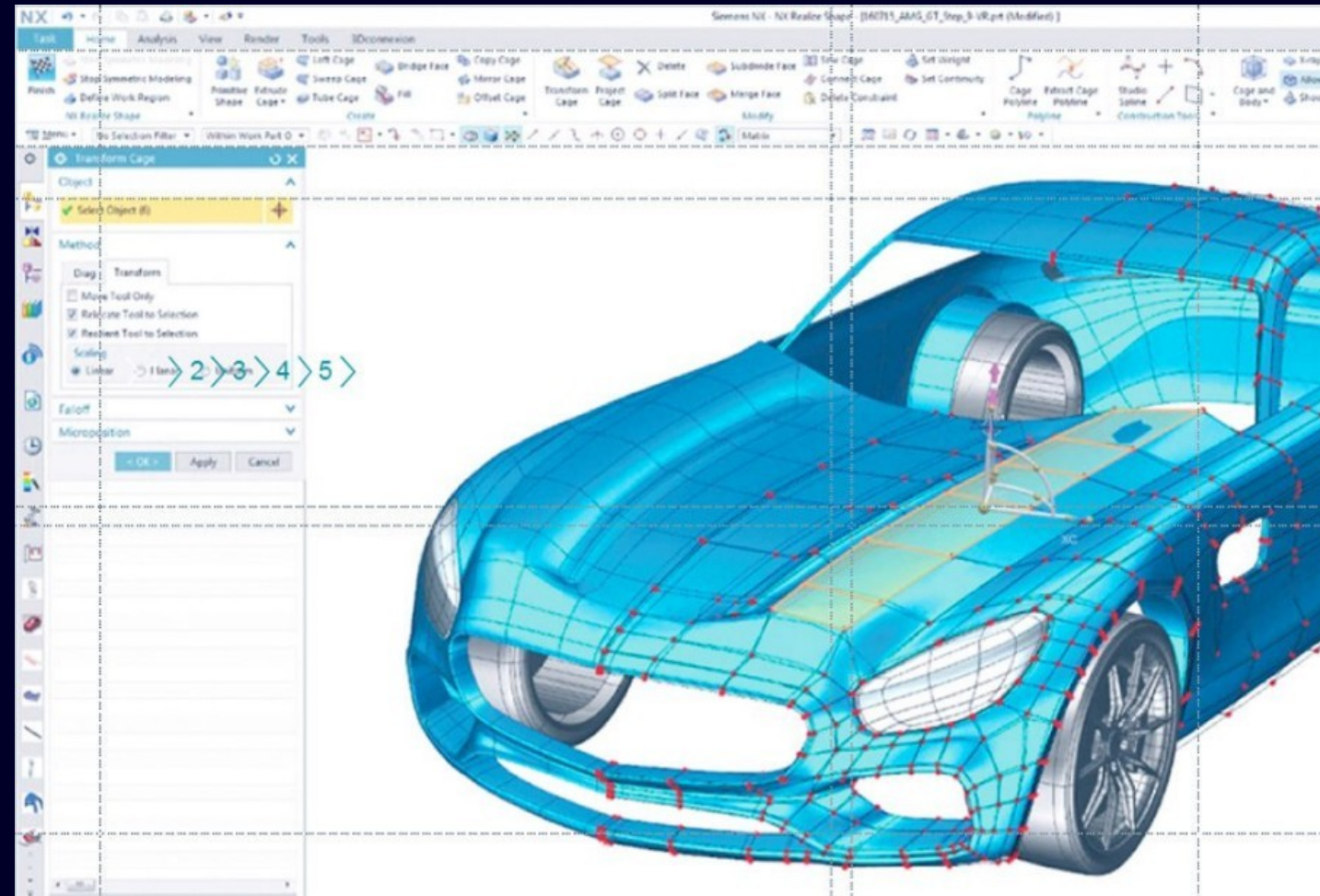
Engineering more than 100 years ago...



Engineering more than 50 years ago...



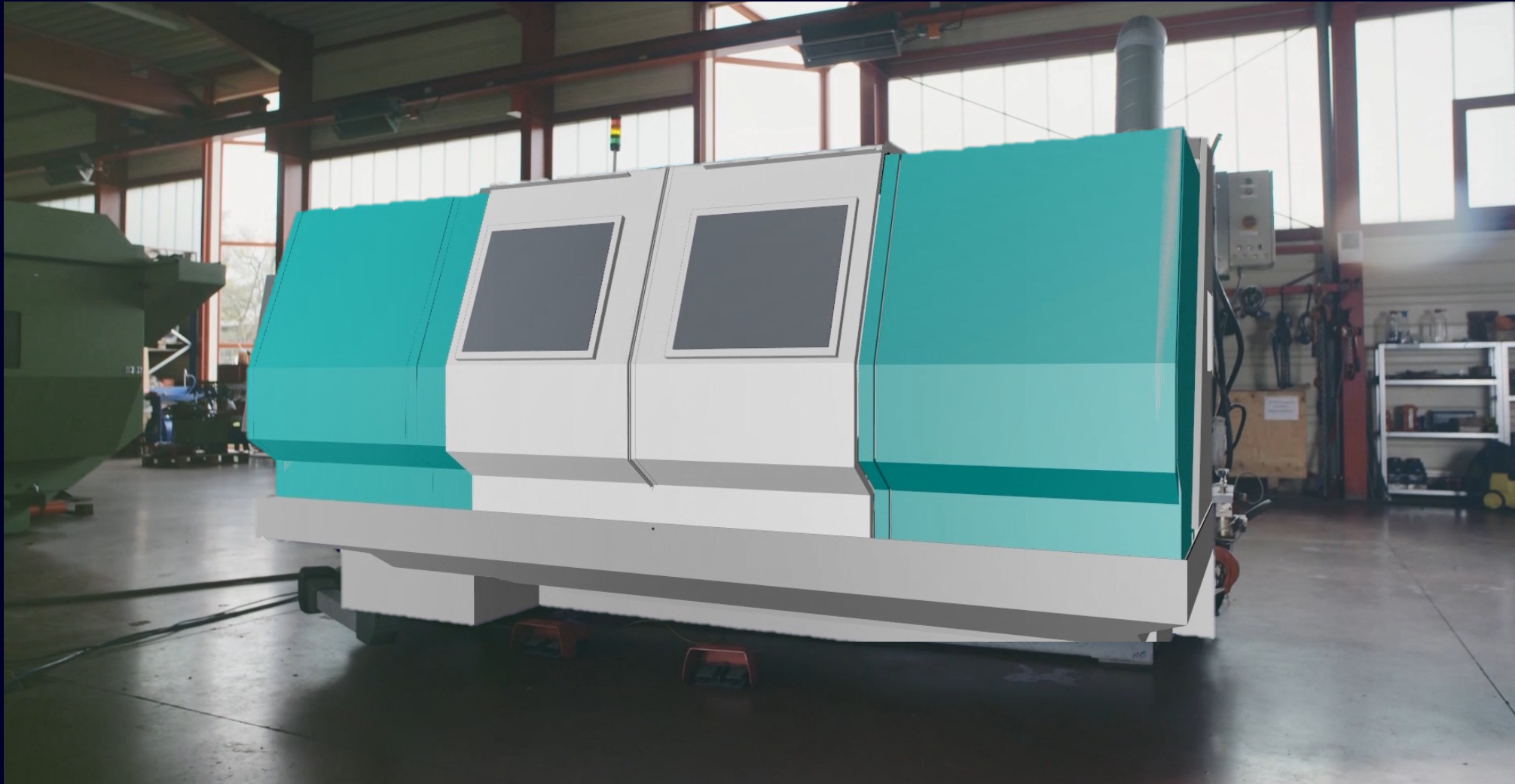
Engineering more than 50 years ago...



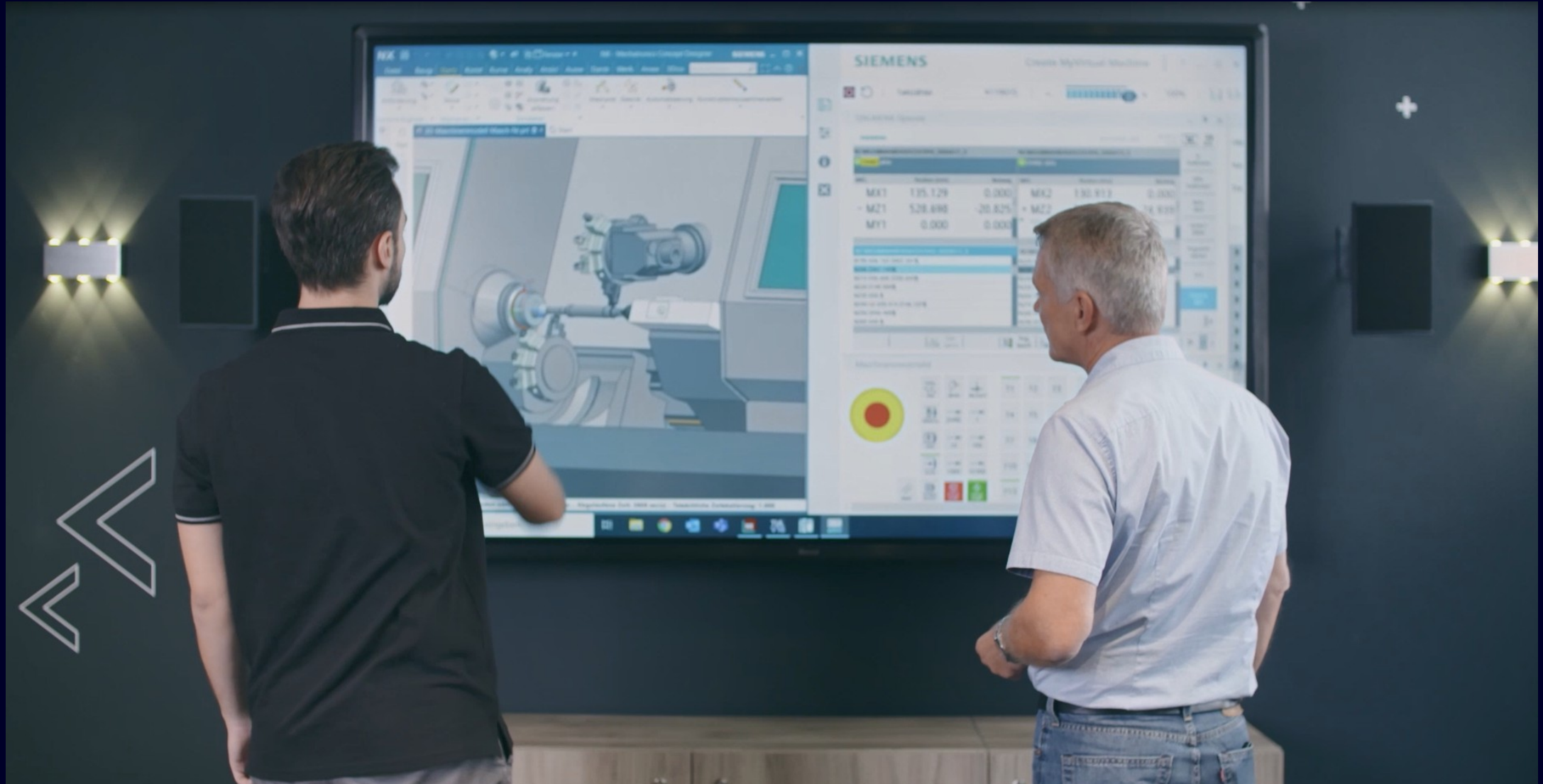
Machine engineering today...



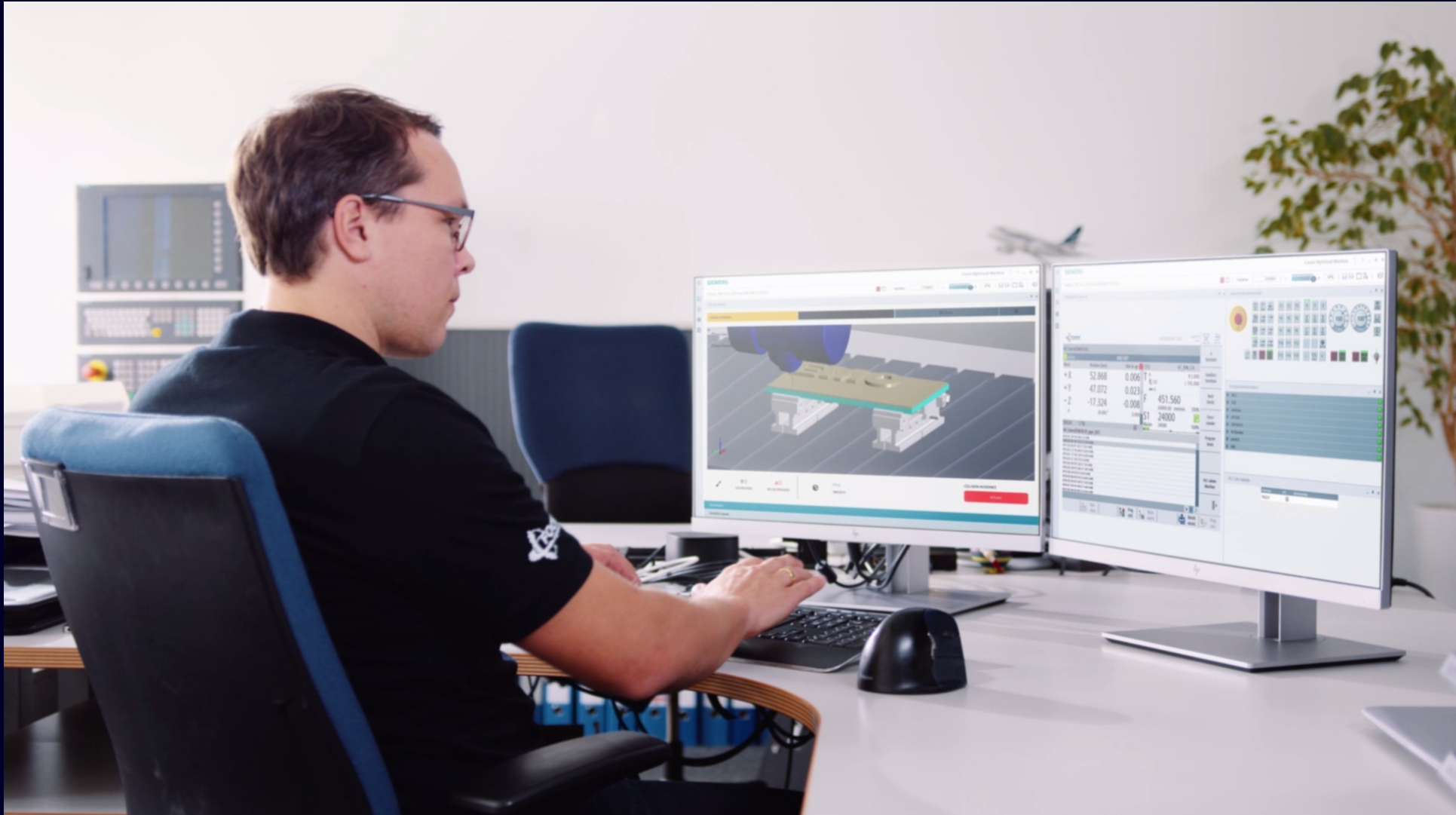
Machine engineering today...



Interaction with the customer before any part of the machine has been built...



Efficient engineering in a virtual environment independent of time and place...



Use cases in machine engineering

Machine operation

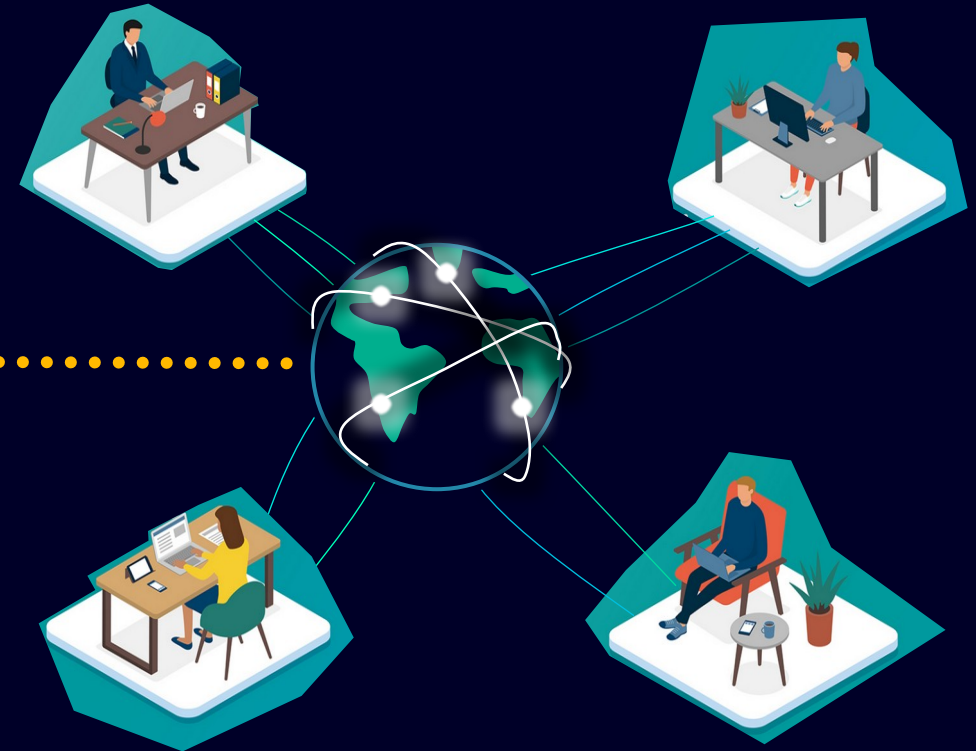
The digital twin as the training environment

Machine manufacturer

- ✓ Time & place independent training via Teams, Skype & co.
- ✓ Safe training environment also for self-learning
- ✓ Learning without real machine or production interruption



Machine operator

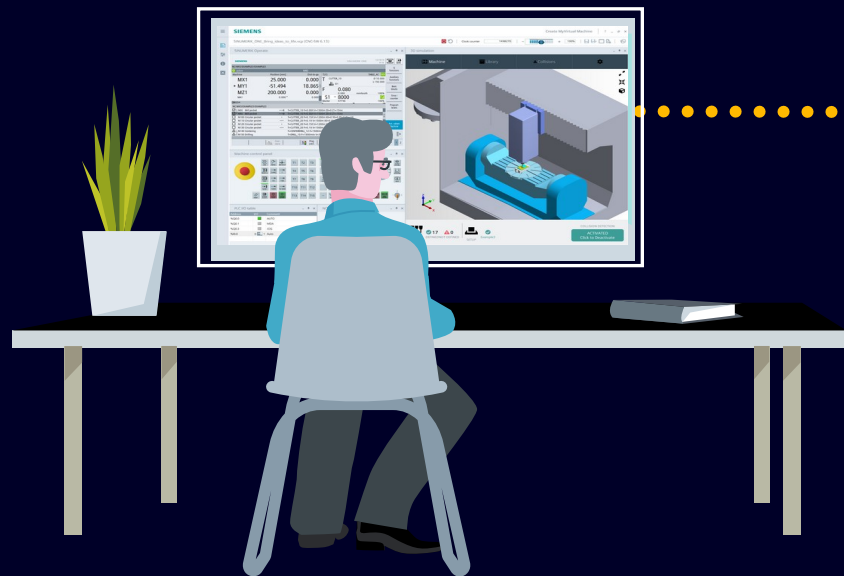


Machine services

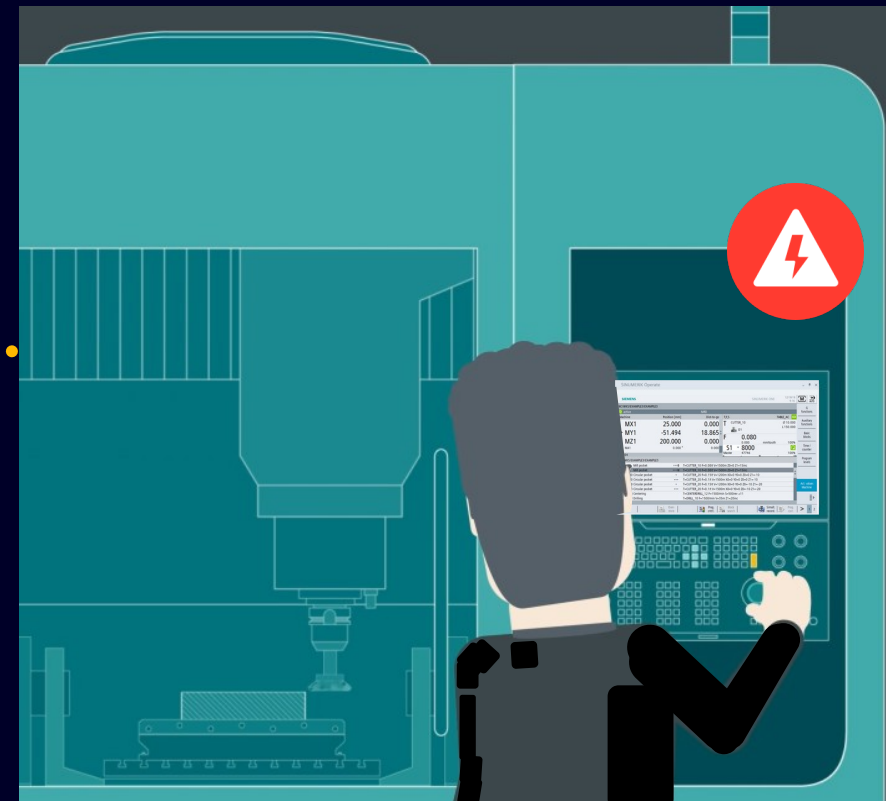
The digital twin for servicing

Machine manufacturer

- ✓ Reuse existing machine model to reproduce customer's problem
- ✓ Aftersales: Evaluating the implementation of customer requests with the help of digital twin



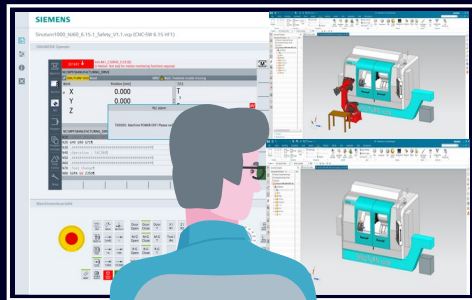
Machine operator



The digital twin in presales

Collaborative and transparent project meeting with digital prototypes

Machine manufacturer



- ✓ Reuse existing machine model
- ✓ Evaluation of the implementation of subsequent customer requests with the help of the digital twin

Machine buyer



How the Digital Twin can be utilized at the Machine User?

**Machine
manufacturer**



Machine User



Operating at the real machine



Verification on the digital twin



Machine protection

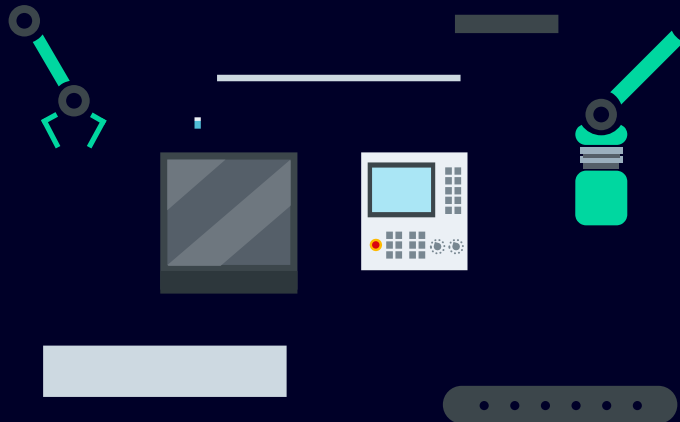


Use cases in job preparation

Machine in delivery

Faster start of production

Machine Tool Manufacturer

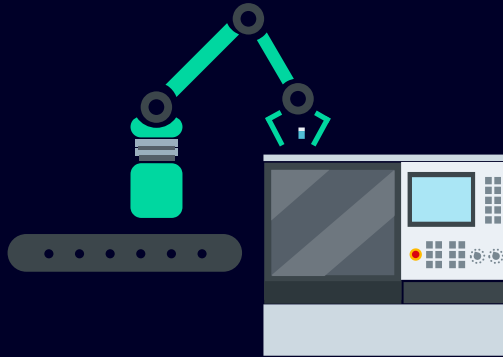


Machine Tool User

Machine in delivery

Faster start of production

Machine Tool Manufacturer



✓ Commissioning

Delivery



Machine Tool User

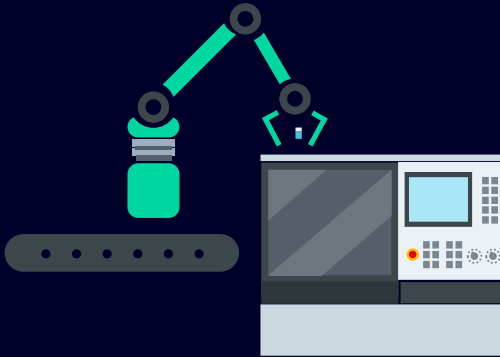


Waiting delivery time

Machine in delivery

Faster start of production

Machine Tool Manufacturer



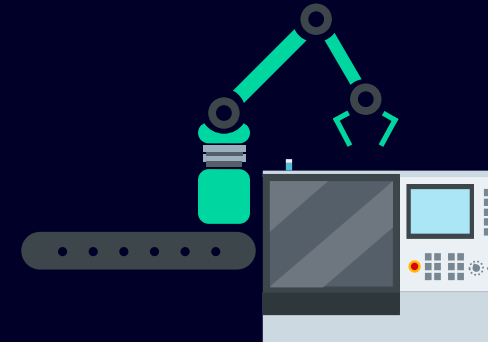
✓ Commissioning

Delivery

Machine Tool User

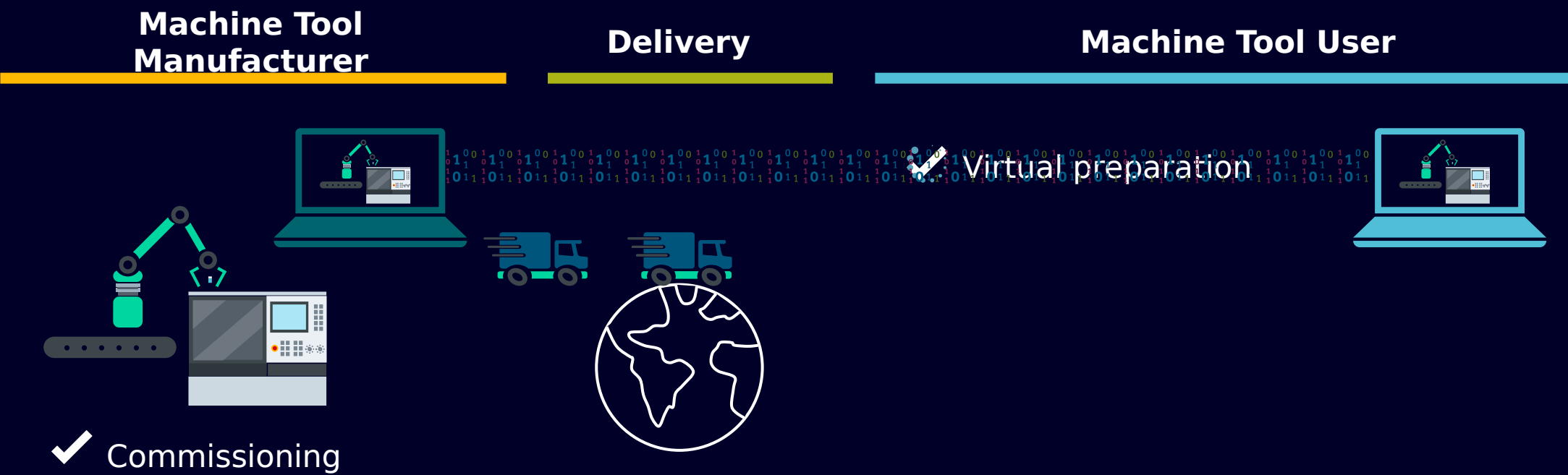
⌚ Waiting delivery time

⚙️ Ramp-up time



✗ Machine ramp-up takes a lot of time before the value add production can be started

Machine in delivery
Faster start of production



Machine in delivery

Faster start of production

Machine Tool Manufacturer



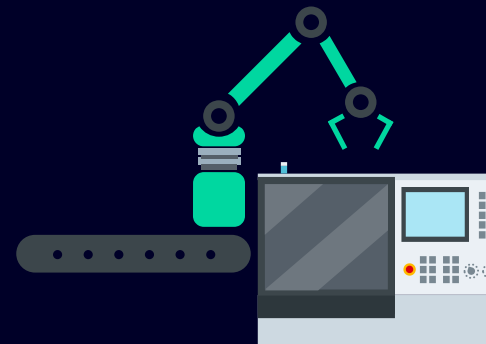
✓ Commissioning

Delivery

Machine Tool User

✓ Virtual preparation

⚙ Ramp-up time



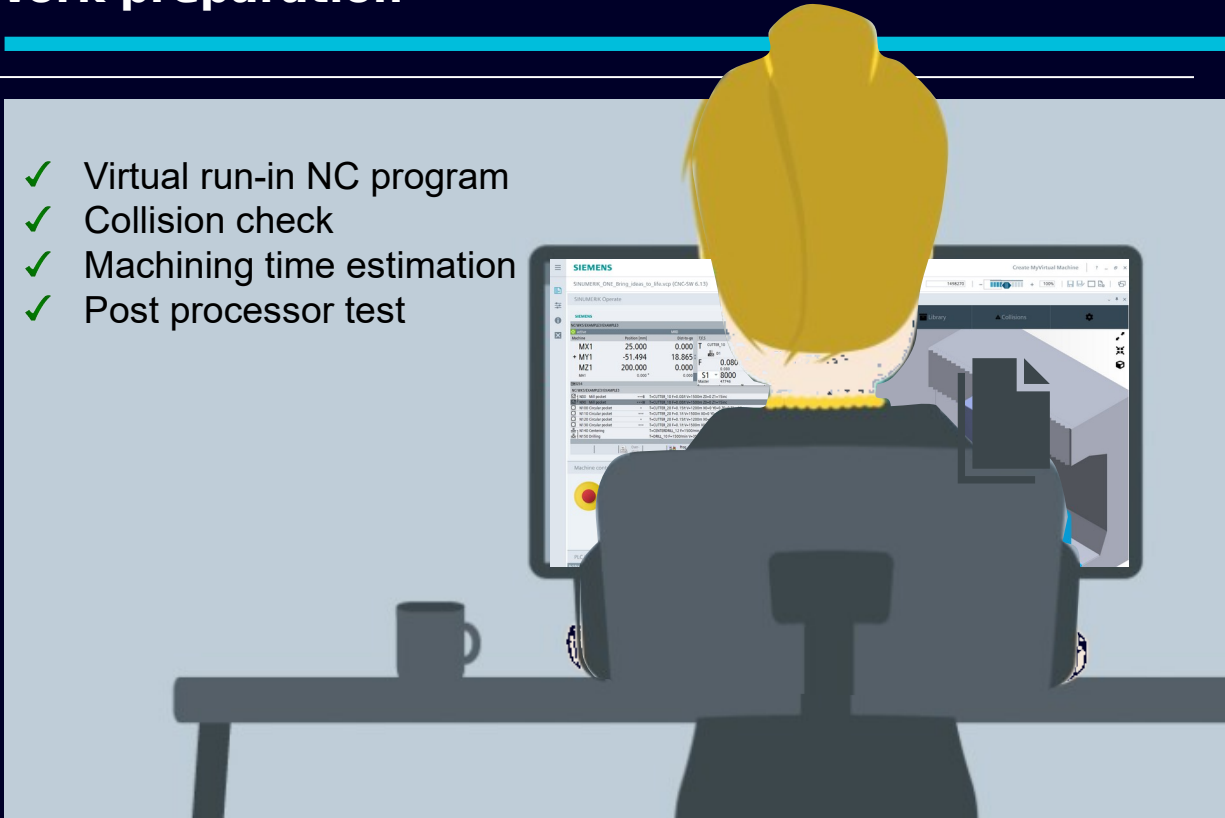
✓ Essentially shorten the commissioning time at the final destination based on preparation on a virtual model

Machine operation

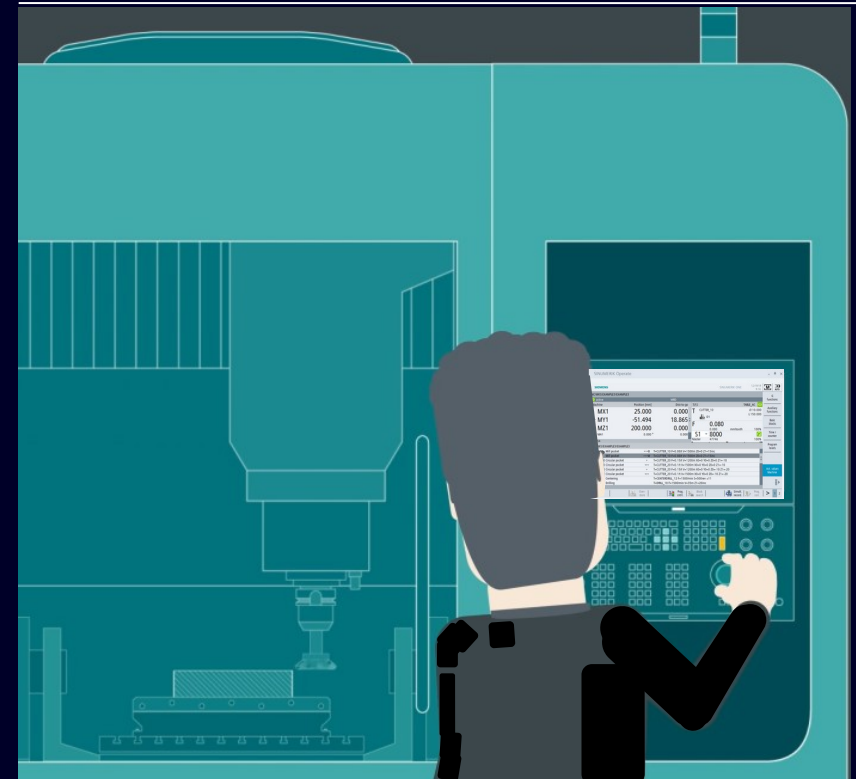
Export of a digital twin for work preparation

Work preparation

- ✓ Virtual run-in NC program
- ✓ Collision check
- ✓ Machining time estimation
- ✓ Post processor test



Work execution



References

Digital Twin from machine manufacturer to machine user!

OEM: MAKA; 9 axis gantry milling centers
PM270

OEM: Tongtai; 5 axis turn-mill machine

End User: National Cheng Kung University;
prototyping for racing team



| Contact

Published by Siemens AG

Johann Dietrich

Product Manager Smart Virtual Machine

DI MC MTS VAL

Mobile +49 173 3646166

E-mail johann.dietrich@siemens.com