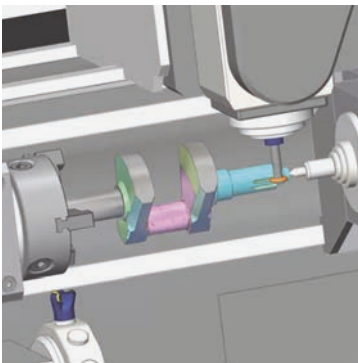
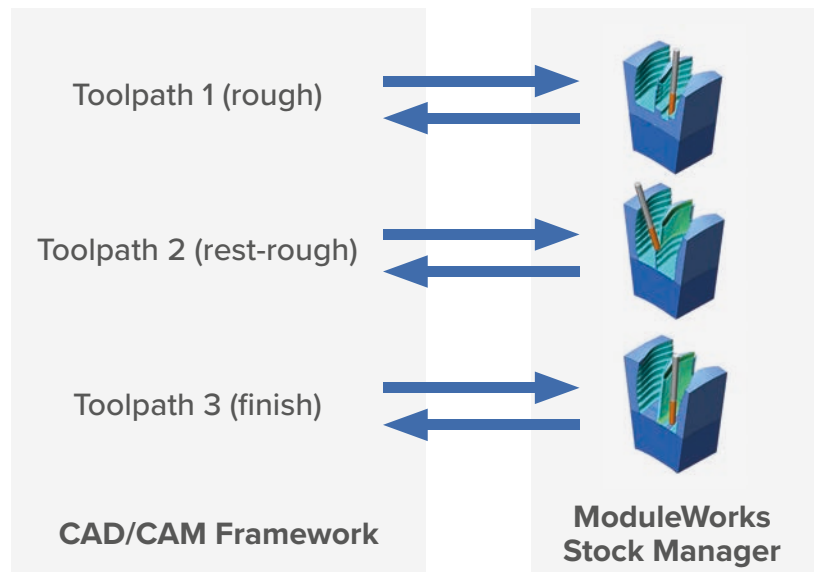


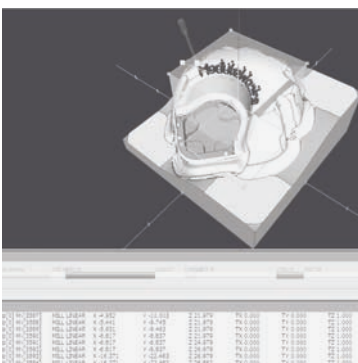


Stock Manager Component

Stock Manager is a library that provides in-process stock models at the operation planning and designing stage. Stock models are added to the ModuleWorks project structure and can be easily integrated into existing toolpath planning stages to provide useful features such as stock measurement and multi-channel machining.



Milling and Turning



Stock Manager UI Demo

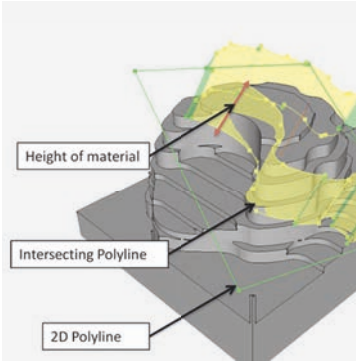
Key Benefits

- State-of-the-art technology
- Industry-proven core technology
- Reduced time to market
- Cost effective implementation of material removal

Stock Model Management

- Handle complex multi-stock simulation
- Material removal during operation planning/design
- Handles multiple instances of cutting simulation
- Simple interface to the removal engine
- Stock model available at any given point in the operation

Fact Sheet: Stock Manager Component



Stock Measurement

Stock Measurement

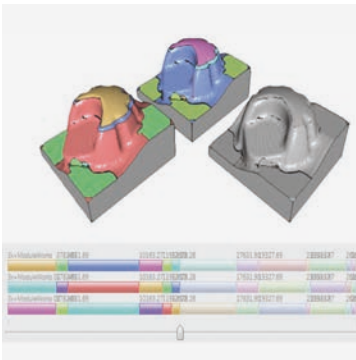
- Retrieve intersecting polylines from a 2D polyline and current material
- Return the height of material within the intersecting polyline
- Measure the positions and depth of the remaining material



Slide to reload Stock

Persistency

- User can “rollback” the simulation
- Simulation can be restarted after rollback from a specific point with different parameters



Multi-Workpiece Feature

Multi Channel Machining

- Multiple workpieces
- Simultaneous removal over all workpieces
- Mixed precisions
- Mixed datamodels
- Change the workpiece position during the run

For information on other CAD/CAM components, including 3-axis and 5-axis toolpaths, visit:

www.moduleworks.com



ModuleWorks

ModuleWorks GmbH
Aachen, Germany
Tel: +49 241 99 000 40
info@moduleworks.com
www.moduleworks.com

ModuleWorks Japan
Fujisawa, Japan
Tel: +81 466 54 9144
hashimoto.h@moduleworks.com
www.moduleworks.com



Sign up for our Newsletter at:
www.moduleworks.com